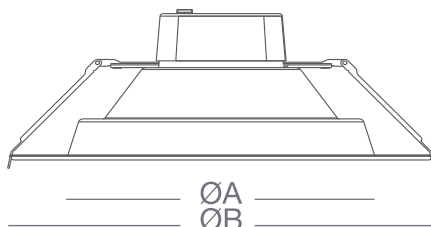


**WARNING / ATTENTION**

- Read all product labels and instructions before installing fixture.
- Risk of fire or electric shock. LED Retrofit Kit installation requires knowledge of luminaires electrical systems. Installation should be performed only by a qualified electrician in accordance with the National Electrical Code and relevant local code.
- Risk of fire or electric shock. Install this kit only in the luminaires that have the construction features and dimensions shown in the photographs and/or drawings.
- To prevent wiring damage or abrasion, do not expose wiring to edges of sheet metal or other sharp objects.
- Do not make or alter any open holes in an enclosure of wiring or electrical components during kit installation.
- The recessed luminaire is intended for mounting only in a covered ceiling where only the led side of the luminaire will be exposed to damp or dry locations.
- INSTALLATION SHOULD ONLY BE PERFORMED AFTER POWER TO THE FIXTURE HAS BEEN DISCONNECTED

**COMMERCIAL DOWNLIGHT HOUSING COMPATIBILITY**


Model	A	B	C
MRL-62200C	5.87" (149mm)	8.27" (210mm)	4.02" (102mm)
MRL-83000C	7.44" (189mm)	10.24" (260mm)	4.33" (110mm)

**MRL-62200C** is compatible with most standard housing with aperture ranging from 6.0"-7.4" (153-190mm)

**MRL-83000C** is compatible with most standard housing with aperture ranging from 7.6"-9.4" (195-240mm)

**RETROFIT INSTALLATION**

1. Make sure the **POWER IS TURNED OFF** at the source to the recessed housing in which you are installing the product.
2. Remove the existing fixture and trim (fig. 1).
3. Open the J-box and cut away all wires connected to the fixture.
4. Attach the carabiner safety clip from the new fixture to the existing fixture housing (fig. 2).
5. Insert lamp conduit into the J-box and wire to power source (black to hot, white to neutral, green to ground) (fig. 3). If a dimmer is used connect the purple wire to the "+" (typically purple wire) and the gray wire to the "-" (typically gray wire). Reattach J-box cover when done.
6. Adjust the lamp power to desired lumen output and CCT by sliding the selector switches on top of fixture housing (fig. 4).
7. Squeeze the two housing clips so they are in an upright position and insert lamp into housing (fig. 5).
8. Once lamp is inside the housing, release the housing clips and continue pushing lamp into housing until securely fixed and flush with ceiling (fig. 6).

fig. 1

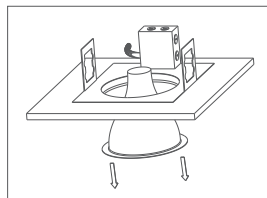


Fig. 2

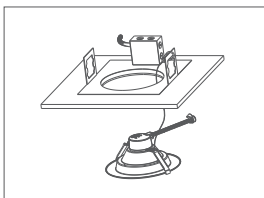


fig. 3

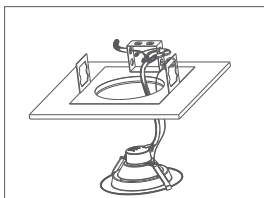


fig. 4

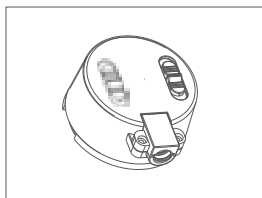


fig. 5

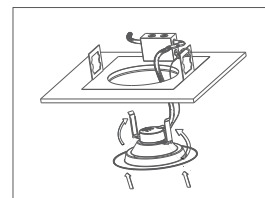
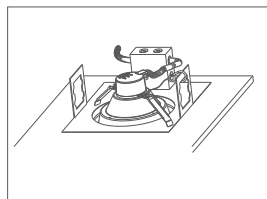
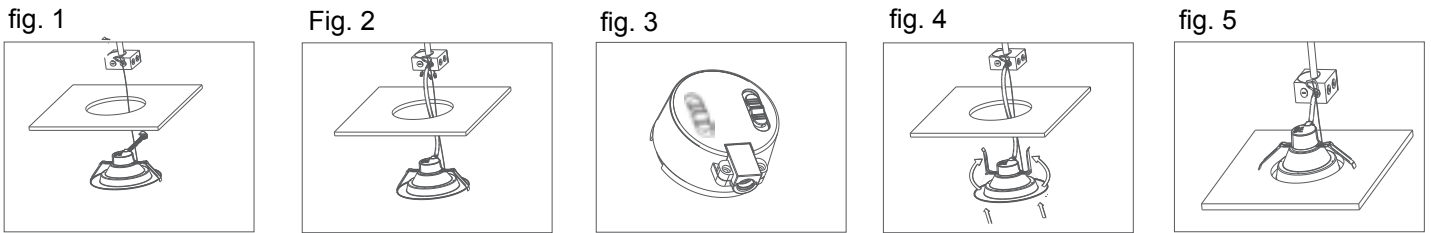


fig. 6



## NEW CONSTRUCTION INSTALLATION

1. Make sure the **POWER IS TURNED OFF** at the source to the location in which you are installing the product.
2. Determine the location for installation and cut a ceiling hole with an approximate "A" diameter as stated in the commercial down light housing compatibility table.
3. Attach the carabiner safety clip to a secure place inside the ceiling (fig. 1).
4. Insert lamp conduit into the J-box and wire to power source (black to hot, white to neutral, green to ground) (fig. 2). If a dimmer is used connect the purple wire to the "+" (typically purple wire) and the gray wire to the "-" (typically gray wire). Reattach J-box cover when done.
5. Adjust the lamp power to desired lumen output and CCT by sliding the selector switches on top of fixture housing (fig. 3).
6. Squeeze the two housing clips so they are in an upright position and insert lamp into the ceiling (fig. 4).
7. Once lamp is inside the ceiling, release the housing clips and continue pushing lamp into ceiling until securely fixed and flush (fig. 5).



## APPROVED DIMMERS

- Leviton: IP710-FZ
- Lutron: DVSTV-WH
- Maxxima: MEW-DM600LV, MEW-DM650LV

## WARRANTY

### Five Year Warranty:

Maxxima extends a 5 year limited warranty to the original purchase that the products listed are free from defects in material and/or workmanship only. Maxxima will replace any warranted product to the original consumer/purchaser if the product fails because of defects due to workmanship and/or materials within the limited warranty period. Limited warranty is not transferable and applies to the original installation of the Maxxima product. This offer does not constitute in any way a product guarantee and Maxxima does not hereby assume any obligation whatsoever beyond sending a free replacement product.