



5" & 6" LED Retrofit-Kit Installation Guide

MRL-61455DW

www.maxximastyle.com

⚠ WARNINGS ⚠

- Risk of fire or electric shock - Disconnect power at the source before installation.
- If you are unsure about the installation or the maintenance of the fixture, please consult an electrician.
- Do not make or alter any holes in the wiring enclosure or modify any electrical componentry.
- To prevent wiring damage or abrasion, do not expose wiring to edges of sheet metal or other sharp objects.
- Install this kit only in the luminaire that has the construction features and dimensions shown in the drawings and where the input rating of the retrofit kit does not exceed the input rating of the luminaire.
- Risque d'incendie ou d'électrocution - Couper l'alimentation à la source avant l'installation.
- Si vous n'êtes pas sûr de l'installation ou de la maintenance de l'appareil, veuillez consulter un électricien.
- Ne percez ou ne modifiez aucun trou dans le boîtier de câblage ou modifier tout composant électrique.
- Pour éviter d'endommager le câblage ou de l'abrasion, n'exposez pas le câblage sur les bords de la tôle ou d'autres objets pointus.
- Installez ce kit uniquement dans le luminaire qui a la construction caractéristiques et dimensions indiquées sur les dessins et où les la puissance d'entrée du kit de rénovation ne dépasse pas la puissance d'entrée de le luminaire.

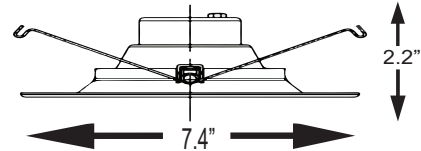
CAUTIONS

- The fixture must be wired in accordance with the National Electric Code (N.E.C) standards and any applicable local codes or ordinances.
- This fixture is not compatible with photo controls, occupancy sensors, or timing devices.
- This fixture is designed for use with 120Vac, 50/60Hz only.
- The retrofit kit is accepted as a component of a luminaire where the suitability of the combination shall be determined by CSA or authorities having jurisdiction.
- Use only fixed luminaire with min. lamp compartment dimensions 143mm(5.6")D x 193mm(7.6")H
- Le luminaire doit être câblé conformément à les normes du National Electric Code (N.E.C) et tous les codes ou ordonnances locaux applicables.
- Ce luminaire n'est pas compatible avec les commandes photo, détecteurs de présence ou dispositifs de temporisation.
- Ce luminaire est conçu pour être utilisé avec 120 Vca, 50/60 Hz uniquement.
- Le kit de rénovation est accepté comme composant d'un luminaire où l'adéquation de la combinaison doit être déterminée par la CSA ou les autorités compétentes.
- Utilisez uniquement un luminaire fixe avec min. compartiment de la lampe dimensions 143 mm (5,6") P x 193 mm (7,6") H

Electrical Parameters:

Model	Input Voltage	Input Frequency	Input Current	Input Wattage
MRL-61455DW	120 VAC	60 Hz	140mA	14W

Product Dimensions:



INSTALLATION INSTRUCTIONS

1. Ensure the power has been turned off by switching the circuit breaker to the off position or by removing the fuse from the fuse panel.
2. Remove and disconnect the existing fixture from the housing.
3. Twist the E26 adapter into the housing as shown in figure 1.
4. Set the distance of the torsion springs for the size housing being used they are set at 6" from the factory, if using a 5" housing the springs must be moved to the inner most position.
5. Connect the orange connector to the E26 adapter as shown in figure 2.
6. Press the torsion springs together on both sides and ensure both torsion spring are in the slots within the housing as shown in figure 3.
7. Push the fixture up until flush with ceiling as shown in figure 4.
8. Restore power and the light is now operational. Follow the Wifi instruction manual to pair the light to your network and obtain all new controls.

*Note: Do not connect this light to a dimmer! Only dimmable via app

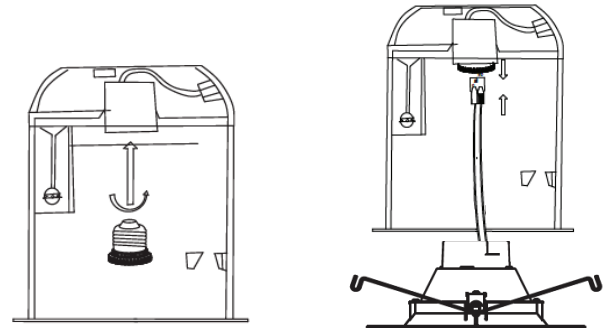


Figure 1

Figure 2

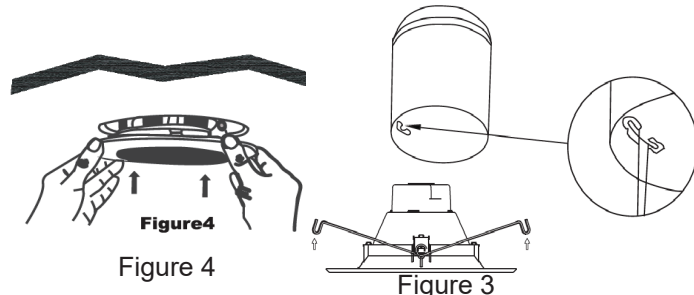


Figure 4

Figure 3

3 YEAR WARRANTY

Maxxima extends a 3 year limited warranty to the original purchase that the products listed are free from defects in material and/or workmanship only. Maxxima will replace any warranted product to the original consumer/purchaser if the product fails because of defects due to workmanship and/or materials within the limited warranty period. Limited warranty is not transferable and applies to the original installation of the Maxxima product. This offer does not constitute in any way a product guarantee and Maxxima does not hereby assume any obligation whatsoever beyond sending a free replacement product.

Luvoni
by Maxxima

WiFi Retrofit LED Down light Installation Guide

Works with Standard ON/OFF Switch or Direct
Wire Installaton



MRL-61455DW

Product name	6" WiFi Retrofit LED Down light
Model No.	MRL-61455DW
Rated Voltage	120VAC
W/LM/CRI	14W / 1000LM/ >80
CCT Range	RGB+2700K-6000K

⚠ WARNINGS AND CAUTIONS

- Risk of fire and electrical shock, products should be installed in accordance with appropriate electrical codes and regulations.
- If you are unsure about any part of these instructions, consult a licensed electrician.
- **DO NOT USE WITH AN IN-WALL DIMMER.** Only Dimmable via the mobile APP.

This device complies with Part 15 of the FCC Rules. Operation is subject to the following two conditions:

(1) This device may not cause harmful interference, and (2) This device must accept any interference received, including interference that may cause undesired operation.

This equipment has been tested and found to comply with the limits for a Class B digital device, pursuant to part 15 of the FCC Rules. These limits are designed to provide reasonable protection against harmful interference in a residential installation. This equipment generates, uses and can radiate radio frequency energy and, if not installed and used in accordance with the instructions, may cause harmful interference to radio communications. However, there is no guarantee that interference will not occur in a particular installation. If this equipment does cause harmful interference to radio or television reception, which can be determined by turning the equipment off and on, the user is encouraged to try to correct the interference by one or more of the following measures:

- Reorient or relocate the receiving antenna.
- Increase the separation between the equipment and receiver.
- Connect the equipment into an outlet on a circuit different from that to which the receiver is connected.
- Consult the dealer or an experienced radio/TV technician for help.

FCC WARNING

This device complies with part 15 of the FCC Rules. Operation is subject to the following two conditions: (1) This device may not cause harmful interference, and (2) this device must accept any interference received, including interference that may cause undesired operation.

FCC warning:

Any Changes or modifications not expressly approved by the party responsible for compliance could void the user's authority to operate the equipment. Note: This equipment has been tested and found to comply with the limits for a Class B digital device, pursuant to part 15 of the FCC Rules. These limits are designed to provide reasonable protection against harmful interference in a residential installation. This equipment generates uses and can radiate radio frequency energy and, if not installed and used in accordance with the instructions, may cause harmful interference to radio communications. However, there is no guarantee that interference will not occur in a particular installation. If this equipment does cause harmful interference to radio or television reception, which can be determined by turning the equipment off and on, the user is encouraged to try to correct the interference by one or more of the following measures:

- Reorient or relocate the receiving antenna.
 - Increase the separation between the equipment and receiver.
 - Connect the equipment into an outlet on a circuit different from that to which the receiver is connected.
 - Consult the dealer or an experienced radio/TV technician for help.
- This equipment complies with FCC radiation exposure limits set forth for an uncontrolled environment. This equipment should be installed and operated with minimum distance 20cm between the radiator & your body.

Mobile APP Set-up

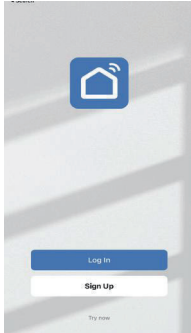
Step 1 Download the "Smart Life" App

- Scan the QR code below to download the 'Smart Life App.
- You can also download this app in the App Store/Android Playstore, search "Smart Life"



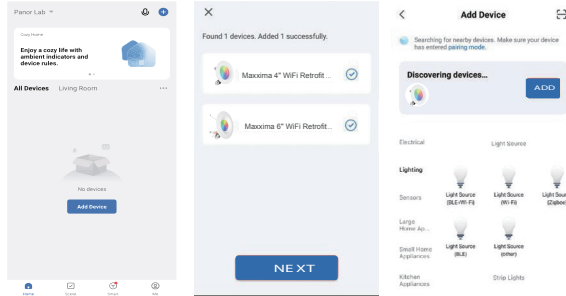
Step 2 Register an account and Login

- Open the Smart Life App, click Register to create an account & login.
- If already registered, login.



Step 3 Selecting the Device

- Click 'Add Device' or the '+' in the top right-hand corner;
- The light should automatically appear to add. If not, you can follow the the next steps.
- Click 'Lighting' then 'Light Source (Wi-Fi)' to enter the device connection interface.

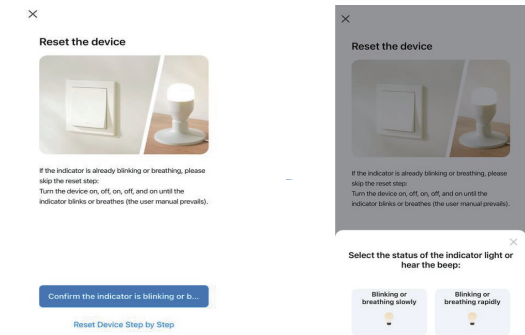


Step 4 Mobile Phone Connection

Step 4a EZ Mode Pairing

When the Retrofit Light is on, flip the switch 3 times (Off-On-Off-On-Off-On). Afterwards, the light will flash quickly (flash once every 1s) and your device will be able to connect to the light. The light will stop flashing once the connection is successful. If there is no connection, device will exit network configuration mode after 3 min.

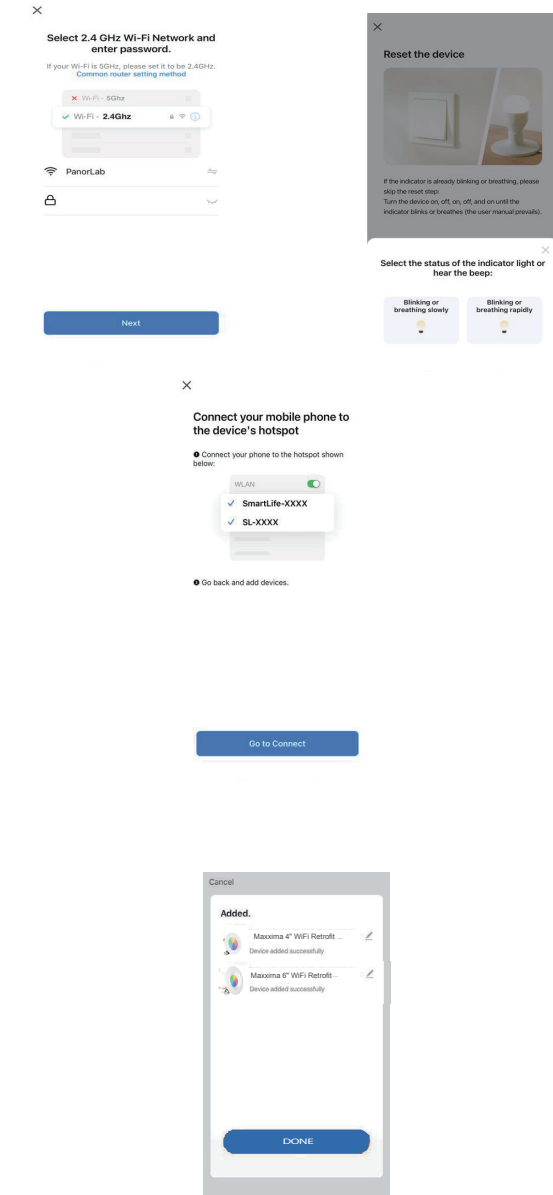
- Enter the Network Name & WiFi password for your home and click Next.
- Confirm the light is flashing. Click "Blinking or breathing rapidly"
- A timer will start for 2 minutes. Device will Connect.



Step 4b

When the Retrofit Light is flashing quickly, flip the switch On and Off 3 more times. The light will flash slowly (flash once every 3s) and your device will be in AP mode. The light will stop flashing once the connection is successful. If there is no connection, device will exit network configuration mode after 3 min.

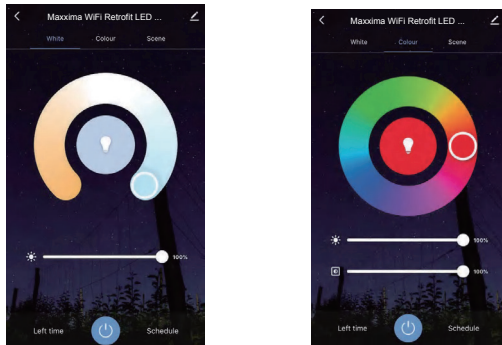
- Enter the Network Name & WiFi password for your home and click Next.
- Confirm the light is flashing slowly. Click "Blinking or breathing slowly"
- Back out of the app and go to your device's Wifi settings. Connect to the light's WiFi hotspot: "SmartLife-XXXX"
- Return to the Smart Life App and wait for the connection to complete



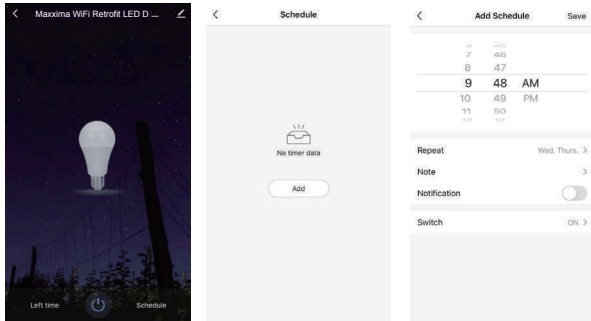
Mobile APP operation

- Select White to adjust the CCT and to Dim the light

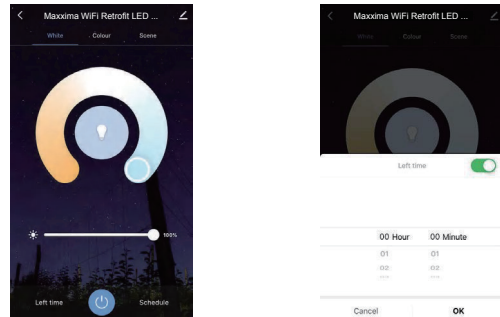
- Select Color to adjust the desired Color of the light, adjust the contrast of the light, or to Dim the light



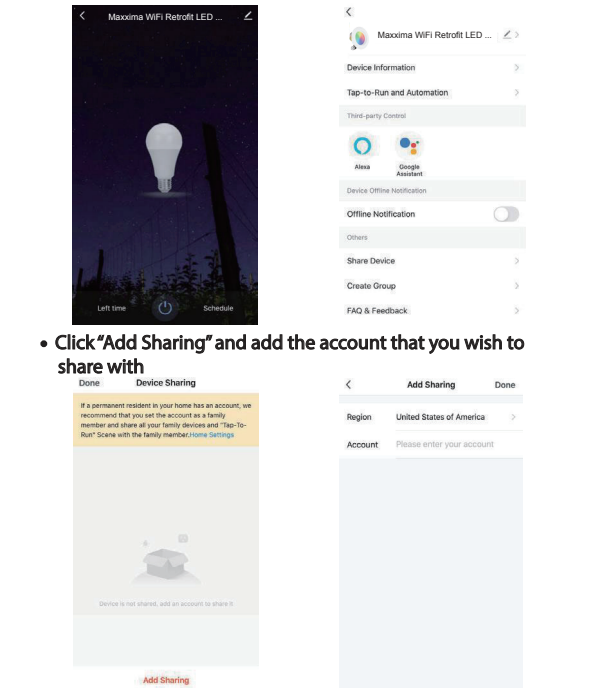
- Click Schedule to set specific times that you wish to turn the light on or off.
- Add the schedule and then press save. Repeat as desired



- Select Left Time to enable a countdown timer for when the light is on. The light will automatically turn off after the desired amount of time has passed.



- After the light is connected to the app, it can be shared with other users i.e multiple users can control the same light.
- Click to enter the device details interface
- Click "Share Device" to enter the device sharing interface



- You may also share all devices in your account with another account
- Go to "Me" at the bottom of the App
- Select "Home Management"
- Select the Home you wish to share with
- Select "Add Member". You can send the invite via your Smart Life account, Message, or Email. New Members must have or create a Smart Life account via the Smart Life App

BlueTooth capability Instructions

When the smart light loses connection to the network, they are unable to be controlled by the app. After 3-5 minutes, the smart lights will automatically switch to Bluetooth control mode. In this mode, the light can still be controlled by a phone at a short distance via bluetooth.

- Note:
1. Make sure Bluetooth is enabled on your phone.
 2. Make sure the product is paired with your mobile phone on the app
 3. Keep your phone connected to the internet

Support Amazon Alexa and Google Home Set-up

For Amazon Alexa

- Open the Alexa app and select "Skills" from the top menu
- On the Skills page, search for Smart Life
- Enable Smart Life in the Alexa App
- Log in with your Smart Life Account (username & password)
- Discover new smart devices in the App or ask Alexa to discover new devices

For Google Home

- Open the Google Home App and tap the "+" icon in the homepage
- Select "Set up device" in the "Add and manage" Screen
- In the "Set Up" screen, tap "New Devices" to set up new devices in your home
- Tap "Works with Google" to authorize Google Home to work with your Smart Life account

Amazon Alexa and Google Home voice control examples

For Amazon Alexa

- Alexa, turn on <device name>
- Alexa, turn off <device name>
- Alexa, set <device name> to percent
- Alexa, brighten/increase <device name>
- Alexa, dim/decrease <device name>

For Google Home

- Hey Google, turn on <device name>
- Hey Google, turn off <device name>
- Hey Google, set <device name> to percent
- Hey Google, brighten/increase <device name>
- Hey Google, dim/decrease <device name>

Trouble-Shooting / Recommendations / Tips

- If the light is offline in the App, make sure the in-wall switch is in the On position. If not, turn on.
- Please check whether the light is connected with power, and your mobile device is connected to a 2.4GHz WiFi Network.
- Check the router. If the router is dual-band, make sure to select 2.4GHz network to add the light. Router Broadcast should be set to open. Also try disabling the 5GHz band temporarily on the router.
- Make sure the WiFi User Name and Password are correct.
- Make sure the light is within the range of the router signal. If not, try moving closer to the router. Check Wi-fi signal on the mobile device to make sure the signal is strong in that area or if it is weak.
- Check to see if the maximum number of devices/lights the router can handle has been reached. If so, remove a device/light and restart the router. If there is no Wi-Fi connection, try restarting the light and/or restarting the router.
- If the device will not go into pairing mode, try the on/off sequence 4 or 5 times instead of 3 times. Also give a second or 2 longer delay between the on/off sequence.
- If the internet signal/connection from the internet provider is down, the light can still be controlled through the mobile device as long as both are connected to the same Network (Intranet).
- If the internet signal/connection is down from your router, this light has a backup bluetooth function that will allow you to control the lights from a certain distance. Ensure bluetooth is enabled on your device.
- For additional troubleshooting tips, visit the webpage listed below <https://www.maxximastyle.com/wifi-help>

3 YEAR WARRANTY

Maxxima extends a 3 year limited warranty to the original purchase that the products listed are free from defects in material and/or workmanship only. Maxxima will replace any warranted product to the original consumer/purchaser if the product fails because of defects due to workmanship and/or materials within the limited warranty period. Limited warranty is not transferable and applies to the original installation of the Maxxima product. This offer does not constitute in any way a product guarantee and Maxxima does not hereby assume any obligation whatsoever beyond sending a free replacement product.

✉ info@maxximastyle.com

☎ 866-MAXXIMA (629-9462)

🌐 www.maxximastyle.com

📍 125 Cabot Court Hauppauge, NY 11788